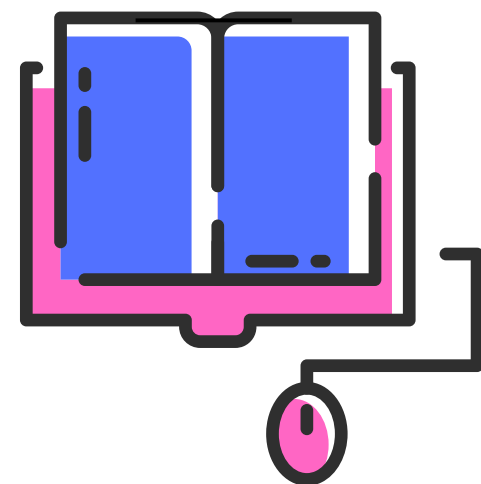


تم تحميل ورفع المادة على منصة

المعلم التعليمي



للعودة الى الموقع اكتب في بحث جوجل



المعلم التعليمي



ALMUALM.COM

Distribution of the syllabus Mega goal 1

Second semester 1 4 4 6

Day	1 st week		2 nd week		3 rd week		4 th week	
Sun	10/0	Reconnect Did You Hurt Yourself? Listen and discuss + pair work Grammar Language in Context +listening	22/0	Did You Hurt Yourself? pronunciation +about you- Conversation Reading Reading Writing Writing	29/0	Did You Hurt Yourself? Form, Meaning and Function Form, Meaning and Function Project + Self Reflection Project + Self Reflection	+7/6	Take My Advice Listen and Discuss + Pair work Grammar language in Context +listening
Mon	16/0		23/0		+1/6		+8/6	
Tue	17/0		24/0		+2/6		+9/6	
Wed	18/0		20/0		+3/6		10/6	Extended vacation
Thurs	19/0		26/0		+4/6		11/6	
Day	5 th week		6 th week		7 th week		Mid-semester vacation	
Sun	14/6	Take My Advice pronunciation +about you +Conversation Reading Reading Writing Writing	21/6	Take My Advice Form, Meaning and Function Form, Meaning and Function Project + Self Reflection Project + Self Reflection	28/6	You've Got Mail Listen and Discuss + Pair work Grammar language in Context +listening pronunciation +about you +Conversation Reading	Vacation begins at the end of Thursday 07/07/1446 H	
Mon	10/6		22/6		29/6		Study resumes on Sunday 11/07/1446 H	
Tue	16/6		23/6		30/6			
Wed	17/6		24/6		+1/7			
Thurs	18/6		20/6		+2/7			
Day	8 th week		9 th week		10 th week		11 th week	
Sun	12/7	You've Got Mail Reading Writing Writing Form, Meaning and Function Project + Self Reflection	19/7	WISHFUL THINKING Listen and Discuss + Pair work Listen and Discuss + Pair work Grammar	26/7	WISHFUL THINKING language in Context +listening pronunciation +about you +Conversation Reading Reading Writing	+3/8	WISHFUL THINKING Writing Form, Meaning and Function Form, Meaning and Function Project + Self Reflection EXPANSION Units 1-4
Mon	13/7		20/7		27/7		+4/8	
Tue	14/7		21/7		28/7		+0/8	
Wed	10/7		22/7		29/7		+6/8	
Thurs	16/7		23/7		30/7		+7/8	
Day	12 th week		13 th week		Important dates			
Sun	10/8	Review	17/8	The Exams	10/0	Beginning of second semester	17/8	beginning of the second semester
Mon	11/8		18/8		10/6	Extended vacation	21/8	End of the second semester
Tue	12/8		19/8		11/6	Extended vacation	24/8	Foundation Day Leave
Wed	13/8		20/8		+3/7	Mid-semester vacation	20/8	Winter vacation
Thurs	14/8		21/8		12/7	Starting study after Mid-semester vacation Extended vacation	+2/9	Beginning of study for the third semester
Headmaster:			Supervisor:			Teacher:		